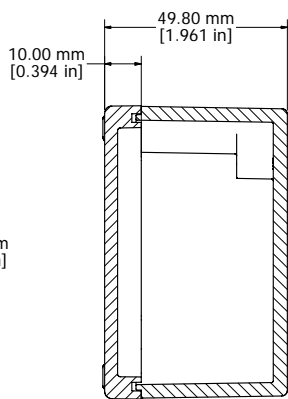
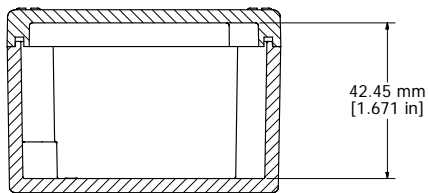


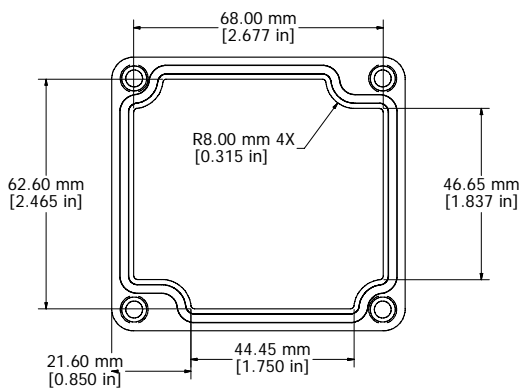
ASSEMBLY



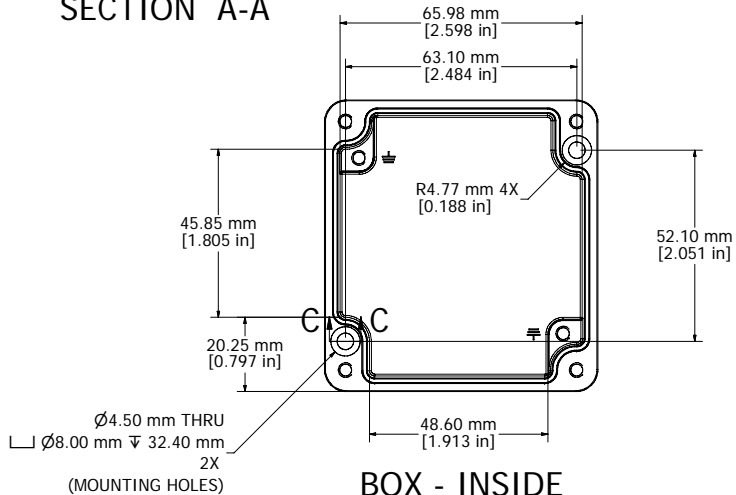
SECTION A-A



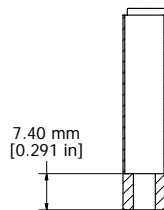
SECTION B-B



LID - INSIDE

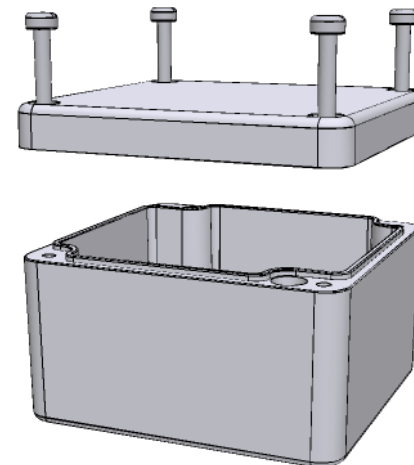


BOX - INSIDE



SECTION C-C

UL US LISTED
File #E65324
NEMA 4, 4X



Enclosures can be Factory Modified (Milling, Drilling, Printing etc.)
Contact Factory mjm@hammondmfg.com for quotes
Solid models of this enclosure available in STEP or IGES.

NOTES

- Purchased assembly includes enclosure, M4x25 lid screws and M4x6 ground screws.
- Gasket - Preformed Silicone Rubber
- Cover screws should be torqued to 10 lb-in (120 cN-m)

1590Z110

PART NUMBERS

| | |
|--------------------------------|------------|
| Basic Enclosure | 1590Z110 |
| Black Enclosure | 1590Z110BK |
| Grey Enclosure - RAL7001 Gloss | 1590Z110GY |

HAMMOND MANUFACTURING™
1590Z110
www.hammondmfg.com